

Whole Person Care – Los Angeles

Clemens Hong MD MPH
Director, Whole Person Care

Vision.

To ensure the most vulnerable individuals living in Los Angeles County have the resources and support they need to thrive

Mission.

Build an integrated health system that delivers seamless, coordinated services to the highest risk LA County residents

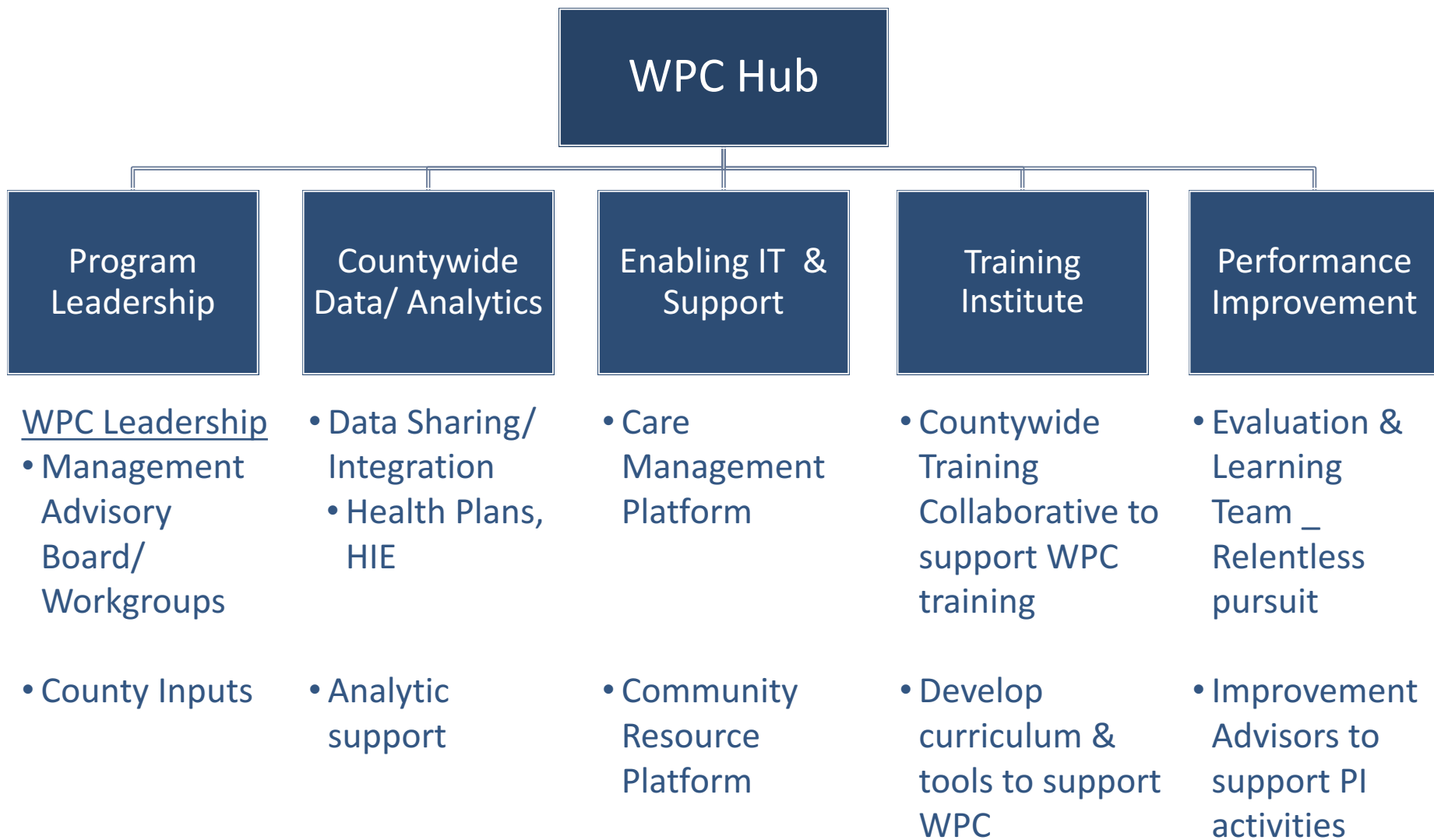
WPC Overview.

- Part of the 1115 Medicaid Waiver
- \$900m (\$450m Federal funding) between 2016-2020
- Builds countywide infrastructure to improve care to high-risk, high-need Medi-Cal beneficiaries that are “high-users” of multiple public systems
- Focus on:
 - Creating an integrated delivery system
 - Care coordination during high-risk times
 - Addressing social and behavioral health needs
 - Create jobs for individuals with shared lived experience

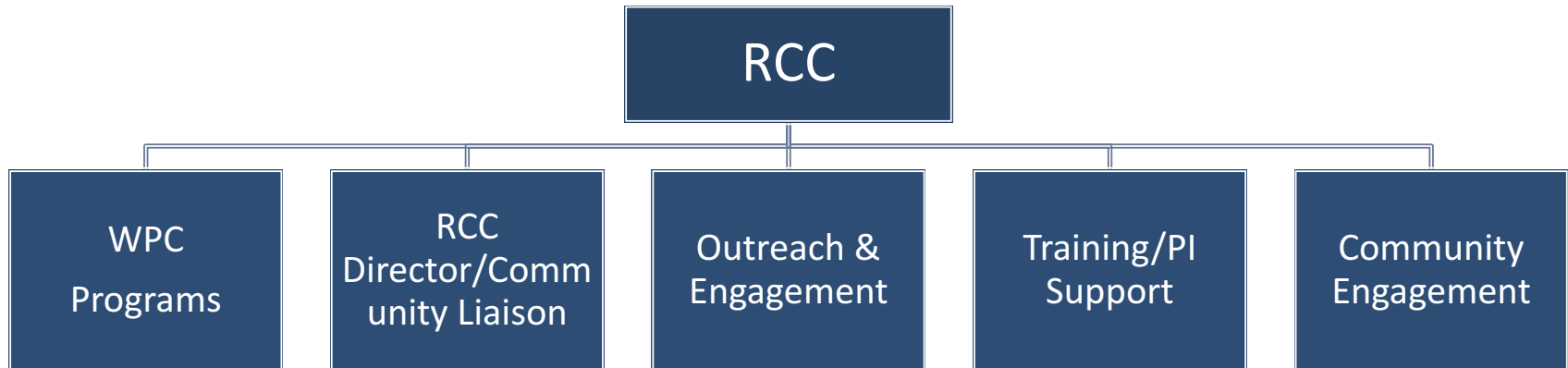
Programs



Central Program Structure



Structure – Regional Coordinating Centers



- Regional Home & Staging Center for each program
- Regional leadership
- Outreach & engagement – real-time engagement at point of care
- Training & Performance Improvement activities
 - Case Conferences & Learning Collaboratives
- Community engagement to fill gaps, create capacity, & strengthen regional delivery system
 - **Community Action Teams** that discuss WPC issues/gaps & collaboratively problem solve

Programs



Overarching Impacts

- ~50,000 served annually
- ~9000 housed
- Support at times of highest risk
- Improved experience

- ~600 new jobs
- Largest Reentry Effort
- Support County priorities
- Training & PI Institute
- Transportation

Patient
Impact

County
Impact

Collaboration

Sustainability

- Collaborative governance
- Cross-county collaboration platform
- Increased community partner engagement

- Leverage WPC infrastructure
- Improve value (CQI)
- Partnerships & integration
- Policy Advocacy

Questions?

Contact:

wpc-la@dhs.lacounty.gov